

LOOKBOOK
CAMELLIA CARDI
BY SANDRA GUTIERREZ





NOMAD
STITCHES





Camellia, named after the puffy pink flowers in my mother-in-law's garden, is here to become your favorite cardigan. Sporting a perfectly fitting yoke with French tailoring, faux set-in sleeves and a deep V-neck, the fit of Camellia is like no other! The lace portions can be added as you wish, and the shawl neckline is optional. Camellia is constructed from the top-down and is completely seamless. The pattern includes many modification options to make sure that it fits YOUR body and style including adjusting measurements of bust and sleeves, adding length, customizing shawl neckline and lace panels, and adding hip shaping. Definitely one to become a wardrobe staple.

#CamelliaCardi



NOMAD
STITCHES



SAMPLE #1

Sample is size 4, crop length with extended lace at hem and buttons band instead of shawl neck.

Model measures ~100 cm/39.25 in at bust.

Yarn used: Cascade Heritage, Solids (75% Merino Wool, 25% Nylon; 100g / 400 m (437 yds) in color Raspberry 5617)



NOMAD
STITCHES



SAMPLE #2

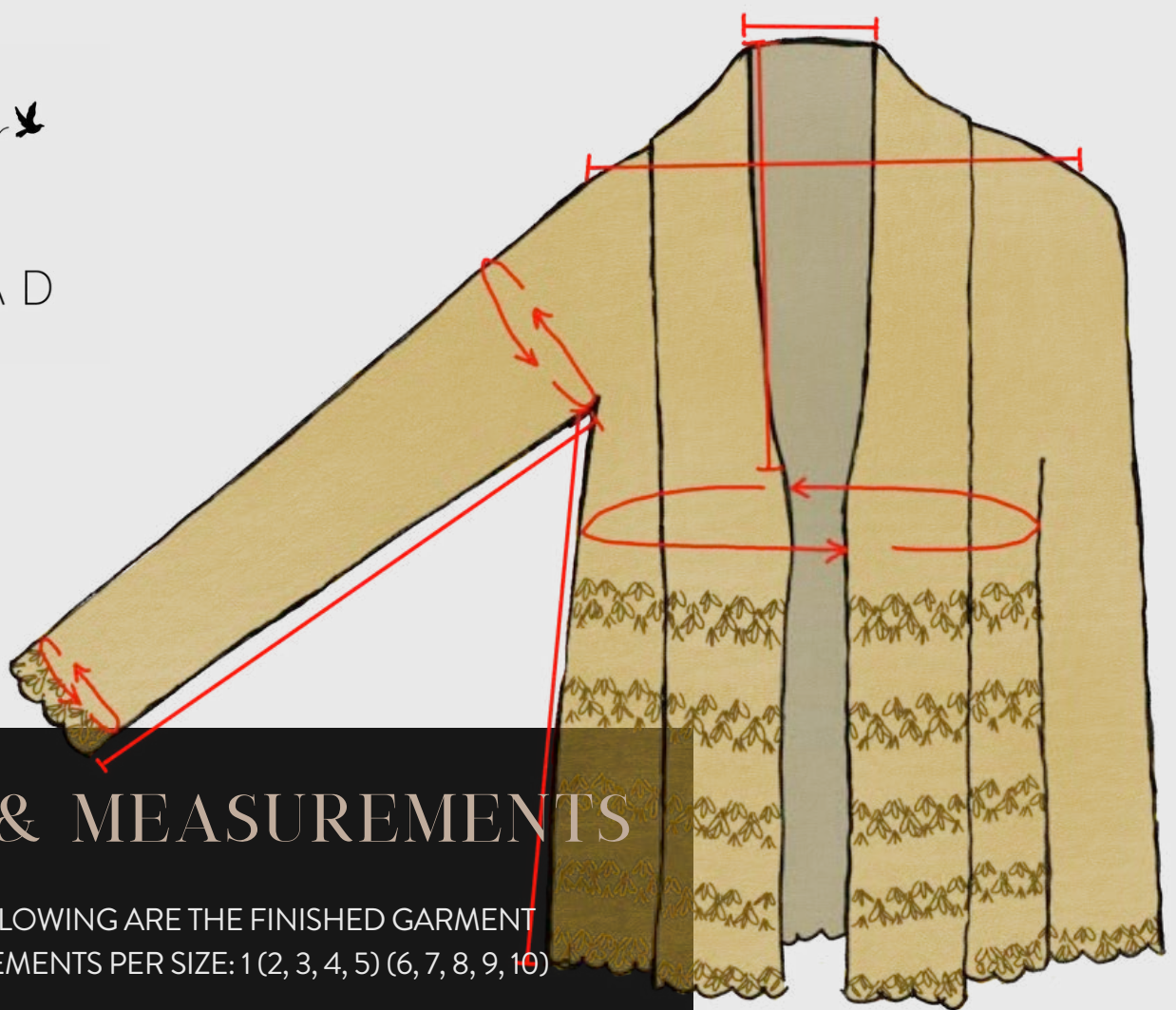
Sample is size 4, hip length with hip shaping and 5 lace panels in body.

Model measures ~100 cm/39.25 in at bust.

Yarn used: Pascuali, Balayage (80% Baby Alpaca, 20% Organic Merino Wool; 50g / 175 m (190 yds)) in color 621.



NOMAD
STITCHES



SIZES & MEASUREMENTS

THE FOLLOWING ARE THE FINISHED GARMENT
MEASUREMENTS PER SIZE: 1 (2, 3, 4, 5) (6, 7, 8, 9, 10)

- Bust: 83 (93.5, 104, 113.5, 124) (134.5, 145, 154.5, 165) cm / $32\frac{3}{4}$ ($36\frac{3}{4}$, 41, $44\frac{3}{4}$, $48\frac{3}{4}$) (53, 57, $60\frac{3}{4}$, 65) in
- Shoulders²: 31 (32.5, 34.5, 37, 39.5) (41.5, 41.5, 42, 43) cm / $12\frac{1}{4}$ ($12\frac{3}{4}$, $13\frac{1}{2}$, $14\frac{1}{2}$, $15\frac{1}{2}$) ($16\frac{1}{4}$, $16\frac{1}{4}$, $16\frac{1}{2}$, 17) in
- Neck Depth: 15.5 (16.5, 18, 19, 20) (21, 21.5, 23.5, 24.5) cm / 6 ($6\frac{1}{2}$, 7, $7\frac{1}{2}$, 8) ($8\frac{1}{4}$, $8\frac{1}{2}$, $9\frac{1}{4}$, $9\frac{1}{2}$) in
- Neck Width: 14.5 (14.5, 14.5, 16, 17) (17, 17, 18, 18.5) cm / $5\frac{3}{4}$ ($5\frac{3}{4}$, $5\frac{3}{4}$, $6\frac{1}{4}$, $6\frac{3}{4}$) ($6\frac{3}{4}$, $6\frac{3}{4}$, 7, $7\frac{1}{4}$) in
- Upper Arm Circumference: 29.5 (31.5, 33, 35, 40) (43.5, 46, 48.5, 50.5) cm / $11\frac{3}{4}$ ($12\frac{1}{4}$, 13, $13\frac{3}{4}$, $15\frac{3}{4}$) (17, $18\frac{1}{4}$, $19\frac{1}{4}$, $19\frac{3}{4}$) in
- Cuff: 25 (25, 28, 28, 28) (28, 31.5, 31.5, 31.5) cm / $9\frac{3}{4}$ ($9\frac{3}{4}$, $11\frac{1}{4}$, $11\frac{1}{4}$, $11\frac{1}{4}$) ($11\frac{1}{4}$, $12\frac{1}{2}$, $12\frac{1}{2}$, $12\frac{1}{2}$) in
- Sleeve Length from Underarm³: 42 (43, 43, 44.5, 44.5) (45.5, 45.5, 47, 47) cm / $16\frac{1}{2}$ (17, 17, $17\frac{1}{2}$, $17\frac{1}{2}$) (18, 18, $18\frac{1}{2}$, $18\frac{1}{2}$) in
- Body Length from Underarm³: 27 - 29 cm / $10\frac{1}{2}$ - $11\frac{1}{2}$ in cropped; 39 - 41 cm / 15 - 16 in hip-length

¹to be worn with 8 - 14 cm / 3 - $5\frac{1}{2}$ in of positive ease around bust.

²Shoulder of garment should be between 3 - 5 cm / $1\frac{1}{4}$ - 2 in smaller than actual shoulder measurements.

³Adjustable to taste





YARDAGE REQUIREMENTS

YARN: Fingering weight yarn (size 1 / 4-ply / sock yarn)

Approx 1065 (1185, 1310, 1455, 1585) (1735, 1900, 2080, 2220) m / 1165 (1295, 1430, 1595, 1730) (1900, 2080, 2275, 2425) yds for a cropped cardigan without shawl neckline.

Approx 1275 (1425, 1575, 1745, 1905) (2085, 2275, 2475, 2645) m / 1395 (1560, 1725, 1915, 2085) (2275, 2485, 2710, 2890) yds for a hip-length cardigan without shawl neckline.

For a shawl neckline that is 13 cm / 5 in wide, add between 245 - 285 m / 265 - 315 yds for a cropped length and 290 - 330 m / 315 - 360 yds for hip-length.

Amounts given include 5% extra for swatching and margin of error. Keep in mind that modifications such as adding length or changing the shawl neckline width will impact the total yardage needed.

ALTERNATIVE YARNS

Any fingering or light sport weight yarn will work, but here are some I recommend based on weight and composition:

- [DMC Natura, Just Cotton \(100% Cotton\)](#)
- [Sirdar, Country Classic 4 Ply \(50% Merino Wool, 50% Acrylic\)](#)
- [Knit Picks, Twill Fingering \(100% Fine Superwash Merino Wool\)](#)

[MillaMia, Naturally Baby Soft \(50% Cotton 50% Soy\)](#)



NOMAD
STITCHES

CHANGES AFTER TESTING

Thanks to testers' feedback, the pattern now includes better instructions to differentiate between those making a Shawl Neckline and those omitting the Shawl Neckline.

PATTERN OVERVIEW



ABOUT

ABOUT THE DESIGNER
Sarah Lawrence is a pattern designer and author of several books on sewing. She is currently working on a new book about pattern making.

ABOUT THE PATTERN
This pattern is designed for a cardigan with a wrap-style front and a shawl collar. It features a simple, elegant design that is easy to make and perfect for transitional weather.

LEVEL
Beginner

FINISHES
Machine Washable

SKILL LEVEL
Beginner

PROJECT TYPE
Cardigan

PROJECT TIME
2-3 hours

PROJECT COST
\$10-20

PROJECT DIFFICULTY
Easy

PROJECT COMPLETION
100%

PROJECT CATEGORIES
Cardigan, Sewing, Pattern

PROJECT TAGS
Cardigan, Sewing, Pattern

PROJECT DESCRIPTION
This pattern is designed for a cardigan with a wrap-style front and a shawl collar. It features a simple, elegant design that is easy to make and perfect for transitional weather.

PROJECT INSTRUCTIONS
1. Cut out the pieces.
2. Sew the pieces together.
3. Finish the edges.

ABBREVIATIONS

ABBREVIATIONS
This section lists the abbreviations used in the pattern, such as 'Bust', 'Waist', and 'Length'. It also includes a list of abbreviations for the pattern pieces, such as 'Front', 'Back', and 'Sleeve'.

ABBREVIATIONS
This section lists the abbreviations used in the pattern, such as 'Bust', 'Waist', and 'Length'. It also includes a list of abbreviations for the pattern pieces, such as 'Front', 'Back', and 'Sleeve'.

ABBREVIATIONS (US)

ABBREVIATIONS (US)
This section lists the abbreviations used in the pattern, such as 'Bust', 'Waist', and 'Length'. It also includes a list of abbreviations for the pattern pieces, such as 'Front', 'Back', and 'Sleeve'.

ABBREVIATIONS (US)
This section lists the abbreviations used in the pattern, such as 'Bust', 'Waist', and 'Length'. It also includes a list of abbreviations for the pattern pieces, such as 'Front', 'Back', and 'Sleeve'.

SPECIAL TECHNIQUES

SPECIAL TECHNIQUES
This section provides instructions for special techniques used in the pattern, such as 'How to Sew a Button Placket' and 'How to Sew a Collar'.

SPECIAL TECHNIQUES
This section provides instructions for special techniques used in the pattern, such as 'How to Sew a Button Placket' and 'How to Sew a Collar'.

ABOUT

ABOUT THE DESIGNER
Sarah Lawrence is a pattern designer and author of several books on sewing. She is currently working on a new book about pattern making.

ABOUT THE PATTERN
This pattern is designed for a cardigan with a wrap-style front and a shawl collar. It features a simple, elegant design that is easy to make and perfect for transitional weather.

LEVEL
Beginner

FINISHES
Machine Washable

SKILL LEVEL
Beginner

PROJECT TYPE
Cardigan

PROJECT TIME
2-3 hours

PROJECT COST
\$10-20

PROJECT DIFFICULTY
Easy

PROJECT COMPLETION
100%

PROJECT CATEGORIES
Cardigan, Sewing, Pattern

PROJECT TAGS
Cardigan, Sewing, Pattern

PROJECT DESCRIPTION
This pattern is designed for a cardigan with a wrap-style front and a shawl collar. It features a simple, elegant design that is easy to make and perfect for transitional weather.

PROJECT INSTRUCTIONS
1. Cut out the pieces.
2. Sew the pieces together.
3. Finish the edges.

PATTERN NOTES

PATTERN NOTES
This section provides additional information about the pattern, such as 'How to Choose Your Fabric' and 'How to Choose Your Buttons'.

PATTERN NOTES
This section provides additional information about the pattern, such as 'How to Choose Your Fabric' and 'How to Choose Your Buttons'.

THE PATTERN

THE PATTERN
This section provides instructions for how to use the pattern, such as 'How to Cut Out the Pieces' and 'How to Sew the Pieces Together'.

THE PATTERN
This section provides instructions for how to use the pattern, such as 'How to Cut Out the Pieces' and 'How to Sew the Pieces Together'.

ABBREVIATIONS (US)

ABBREVIATIONS (US)
This section lists the abbreviations used in the pattern, such as 'Bust', 'Waist', and 'Length'. It also includes a list of abbreviations for the pattern pieces, such as 'Front', 'Back', and 'Sleeve'.

ABBREVIATIONS (US)
This section lists the abbreviations used in the pattern, such as 'Bust', 'Waist', and 'Length'. It also includes a list of abbreviations for the pattern pieces, such as 'Front', 'Back', and 'Sleeve'.

SPECIAL TECHNIQUES

SPECIAL TECHNIQUES
This section provides instructions for special techniques used in the pattern, such as 'How to Sew a Button Placket' and 'How to Sew a Collar'.

SPECIAL TECHNIQUES
This section provides instructions for special techniques used in the pattern, such as 'How to Sew a Button Placket' and 'How to Sew a Collar'.

ABOUT

ABOUT THE DESIGNER
Sarah Lawrence is a pattern designer and author of several books on sewing. She is currently working on a new book about pattern making.

ABOUT THE PATTERN
This pattern is designed for a cardigan with a wrap-style front and a shawl collar. It features a simple, elegant design that is easy to make and perfect for transitional weather.

LEVEL
Beginner

FINISHES
Machine Washable

SKILL LEVEL
Beginner

PROJECT TYPE
Cardigan

PROJECT TIME
2-3 hours

PROJECT COST
\$10-20

PROJECT DIFFICULTY
Easy

PROJECT COMPLETION
100%

PROJECT CATEGORIES
Cardigan, Sewing, Pattern

PROJECT TAGS
Cardigan, Sewing, Pattern

PROJECT DESCRIPTION
This pattern is designed for a cardigan with a wrap-style front and a shawl collar. It features a simple, elegant design that is easy to make and perfect for transitional weather.

PROJECT INSTRUCTIONS
1. Cut out the pieces.
2. Sew the pieces together.
3. Finish the edges.

PATTERN NOTES

PATTERN NOTES
This section provides additional information about the pattern, such as 'How to Choose Your Fabric' and 'How to Choose Your Buttons'.

PATTERN NOTES
This section provides additional information about the pattern, such as 'How to Choose Your Fabric' and 'How to Choose Your Buttons'.

THE PATTERN

THE PATTERN
This section provides instructions for how to use the pattern, such as 'How to Cut Out the Pieces' and 'How to Sew the Pieces Together'.

THE PATTERN
This section provides instructions for how to use the pattern, such as 'How to Cut Out the Pieces' and 'How to Sew the Pieces Together'.

ABBREVIATIONS (US)

ABBREVIATIONS (US)
This section lists the abbreviations used in the pattern, such as 'Bust', 'Waist', and 'Length'. It also includes a list of abbreviations for the pattern pieces, such as 'Front', 'Back', and 'Sleeve'.

ABBREVIATIONS (US)
This section lists the abbreviations used in the pattern, such as 'Bust', 'Waist', and 'Length'. It also includes a list of abbreviations for the pattern pieces, such as 'Front', 'Back', and 'Sleeve'.

SPECIAL TECHNIQUES

SPECIAL TECHNIQUES
This section provides instructions for special techniques used in the pattern, such as 'How to Sew a Button Placket' and 'How to Sew a Collar'.

SPECIAL TECHNIQUES
This section provides instructions for special techniques used in the pattern, such as 'How to Sew a Button Placket' and 'How to Sew a Collar'.

ABOUT

ABOUT THE DESIGNER
Sarah Lawrence is a pattern designer and author of several books on sewing. She is currently working on a new book about pattern making.

ABOUT THE PATTERN
This pattern is designed for a cardigan with a wrap-style front and a shawl collar. It features a simple, elegant design that is easy to make and perfect for transitional weather.

LEVEL
Beginner

FINISHES
Machine Washable

SKILL LEVEL
Beginner

PROJECT TYPE
Cardigan

PROJECT TIME
2-3 hours

PROJECT COST
\$10-20

PROJECT DIFFICULTY
Easy

PROJECT COMPLETION
100%

PROJECT CATEGORIES
Cardigan, Sewing, Pattern

PROJECT TAGS
Cardigan, Sewing, Pattern

PROJECT DESCRIPTION
This pattern is designed for a cardigan with a wrap-style front and a shawl collar. It features a simple, elegant design that is easy to make and perfect for transitional weather.

PROJECT INSTRUCTIONS
1. Cut out the pieces.
2. Sew the pieces together.
3. Finish the edges.

PATTERN NOTES

PATTERN NOTES
This section provides additional information about the pattern, such as 'How to Choose Your Fabric' and 'How to Choose Your Buttons'.

PATTERN NOTES
This section provides additional information about the pattern, such as 'How to Choose Your Fabric' and 'How to Choose Your Buttons'.

FROM THE DESIGNER

FROM THE DESIGNER
This section provides a personal message from the designer, Sarah Lawrence, about the pattern and her inspiration for it.

FROM THE DESIGNER
This section provides a personal message from the designer, Sarah Lawrence, about the pattern and her inspiration for it.

PROGRESS TABLE FOR YOU

PROGRESS TABLE FOR YOU
This table provides a checklist for the steps involved in making the cardigan, such as 'Cut out the pieces', 'Sew the pieces together', and 'Finish the edges'.

PROGRESS TABLE FOR YOU
This table provides a checklist for the steps involved in making the cardigan, such as 'Cut out the pieces', 'Sew the pieces together', and 'Finish the edges'.

ABBREVIATIONS (US)

ABBREVIATIONS (US)
This section lists the abbreviations used in the pattern, such as 'Bust', 'Waist', and 'Length'. It also includes a list of abbreviations for the pattern pieces, such as 'Front', 'Back', and 'Sleeve'.

ABBREVIATIONS (US)
This section lists the abbreviations used in the pattern, such as 'Bust', 'Waist', and 'Length'. It also includes a list of abbreviations for the pattern pieces, such as 'Front', 'Back', and 'Sleeve'.



TESTERS



XTY

INSTA:

@XYCRAFTSWHATEVER

RAVELRY: XYCRAFTSWHATEVER

Size 1

Monaco 4-ply undyed cotton yarn

MODS

I made short-sleeves for mine so I can wear it more often (I live in a tropical country). For the sleeves, I followed the pattern as is just before the decrease (I made 5cm - 9 rows total) and decreased from 70 to 57 with a rate of 6 sts per row for two rows. The sts are very stretchy and I didn't think the decrease rate made a bumpy effect. I do love the length and how lace cuff turned out



COMMENTS

I had a hard time figuring out the right and wrong side, but placing a stitch marker on one side to mark it (at the yoke) all throughout was very helpful. Also had a hard time figuring out the instructions for the body part, but the photos were very helpful. My favorite part is the lace section! I followed the second sample and did 5 puff rows and I love it so much!





SARAH

INSTA:

@SARAHAMALIA_DESIGN

RAVELRY: SARAHAMALIA

Size 3

Adlibris combed cotton 8/4



MODS

Cropped with 3/4 sleeves and shawl neckline. I made my version without waist/hip shaping and without any lace sections. I added a lace edge by following the instructions for the hem.

COMMENTS

I think my favorite part is the yoke construction, as it is a bit different than what I usually see. The csc was a new stitch for me, and it took time and patience to get a hang of it.







EMILIE COUTURE

INSTA:

@EMILIEMAKESANDCREATES

RAVELRY: EMMAKESANDCREATES

Size 4

*Lab Fibers Everyday Sock in Morning
Mountains*



MODS

I did the button band option instead of the shawl neckline and made the band two rows wider than what the pattern said. I only did two repeats of the lace panels on the body and did them fairly close to the bottom of the cardigan.

COMMENTS

Don't be intimidated by the lace patterns, they look extra fancy but are simple to make. And don't underestimate how much your cardigan will grow with blocking, especially on the sleeves!





ANNE-LAURE

INSTA: @ACTU.AL.CROCHET

RAVELRY: ACTUALCROCHET

Size 2

La Droguerie , Surnaturelle coloris Cannelle

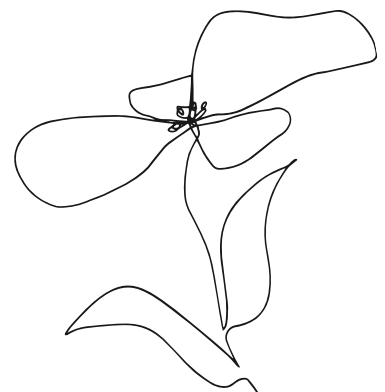
MODS

Being a Leftie I had to do the Left shoulder with the Right shoulder's instructions and vice versa for the Right shoulder / Did the version with a Shawl with 32 sts/ Had to modify the bust and shoulders to be in between size 2 and 3; using the second method described in the pattern/ I did a waist shaping (inverted hip shaping using the Dec row 1 from the sleeves) between the bust and the waist line x2 (3 rows in between); plus followed the hip shaping x3 (left 5 rows between the end of waist shaping and the first row for hip shaping / Did a 3/4 sleeves and just the bottom edging with the lace pattern.



COMMENTS

Trust the process! As usual Sandra is a great designer, no surprises there! I really like the stitch definition plus the easiness of the end, almost no weave in, that's always a bonus for me! The pattern is pretty simple and straightforward, very easy to follow the stitches and not miss one, the repetitive stitches are a bonus for a mindless crochet session when you're at the yoke.





DAWN

INSTA:

@TYD_THEYARNDOCTOR

RAVELRY: DAWNBSTEW

Size 5

Uru yarn unicorn sock 75% wool 15

% donegal neps & navia bumull

55% wool 45% cotton



MODS

I did the shawl and short sleeves, 4 rows of lace and made the last row with an extra 2 rows of lace.

COMMENTS

The pattern was pretty easy to follow, but the chart needed a lot of concentration. This is definitely an advanced pattern, but can really be done by anyone who is adventurous.





CYNTHIA

INSTA:

@ORIGINALCYNCREATIONS

RAVELRY: ORIGCYNCREATIONS

Size 2

Vidalana Linen Jewel (Merino wool/linen/silk blend) in Sandstone & Oasis



MODS

Slightly cropped sleeves and body length. I also added 4 extra chains in the under arm. I did 2 repeats of the lace closer to the bottom in a contrast color and did the lace edging of the sleeves in a contrast color as well.

COMMENTS

The hardest was figuring out the yoke set up without the shawl and also figuring out how to do the increase/decreases at first. My favorite part about the pattern is the fabric that the cesc + ch creates.





LIZ

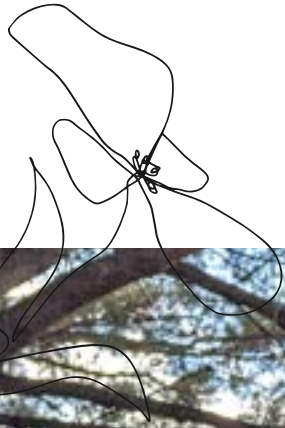
INSTA:

@LITTLEOWLDESIGNS

RAVELRY: LITTLEOWLDESIGNS

Size 3

Woollike by Loops and Threads, black



MODS

I did cropped and 3/4 length sleeves with the button band. I did one panel of lace as the sleeve cuffs and the hem of the body. I did not decrease for the sleeves because they were already snug enough on my arms

COMMENTS

This pattern is different in construction than typical crochet patterns, but the fit is absolutely spot on. I love how it feels on my body!



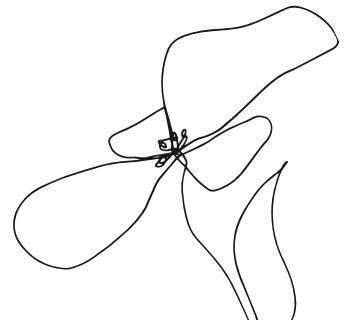


PAULA SANTANA

INSTA: @LANAYPUNTO
RAVELRY: LANAYPUNTO

Size 4

@fibrasurbanas merino sport



MODS

I did the shawl neckline version. I gradient the lace panels from smallest to largest in different colours

COMMENTS

Fully trust the design during the process. It changes a lot when you block it and the fit and fabric are perfect! Awesome design!





ELLIE F

INSTA: EFIFE15

RAVELRY: ELLIEHONEY

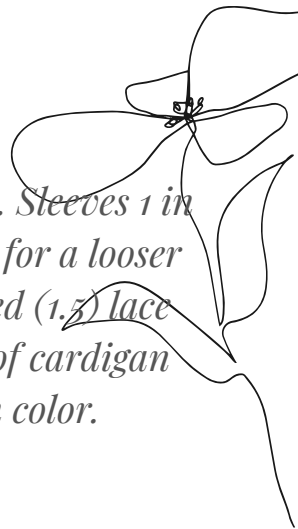
Size 5

*Hawthorne Fingering / Mississippi
colorway*



MODS

Shawl neckline with 28 sts. Sleeves 1 in longer than pattern called for a looser fit and to cover hands. Used (1,3) lace pattern repeat on bottom of cardigan due to business of the yarn color.



COMMENTS

I have always enjoyed your sweater patterns, the construction and stitches used was fun and interesting and the way you incorporate tips and tricks to make a perfect fit for whatever you looking for.





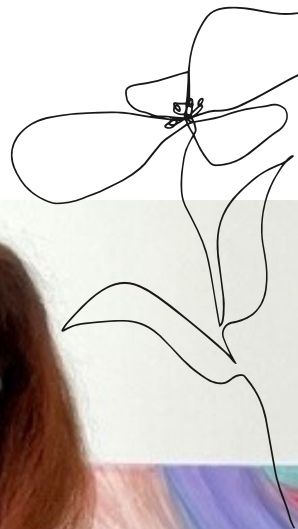
LAURA P

INSTA: @PROFPERACCHIO

RAVELRY: LPERACCH

Size 2

The Border Mill, Alpaca Rose, this yarn is made from 50% alpaca and 50% rose fiber -- Color is Fade. This yarn was fun to work with.



MODS

Made buttons band and omitted shawl. Body only had one lace panel and finished body in patt. This pattern was fun to work with because it allows lots of personalization.

COMMENTS

This stitch (central extended single crochet) seems to take me a bit longer than other stitches. I did get into a rhythm when working on the body and sleeves and then things proceeded more fluidly. Your video tutorials are really excellent. I highly recommend people watch them, even if they know the stitch, because you show subtle things (i.e. where to easily find the place to put your hook, how to begin rows) that help even experienced crocheters.







HOLLYANN MENDLAR

INSTA: MENDLARHOLLYANN
RAVELRY: HMENDLAR

Size 3
Knit Picks Muse



MODS

I did short sleeves, and my shawl color is 32 stitches on each side. I did my lace 1 inch below my arm and then every 4 inches

COMMENTS

Don't be afraid to use variegated yarns, the stitch looks amazing with it. If anything it stands out more





STEPH L

INSTA:

@MINCEPIESTEPHMAKES

RAVELRY: OOBERGIRL

Size 4

Qing Fibre Fjord (80% lambswool, 20% nylon, fingering weight) in colour Royal Grape

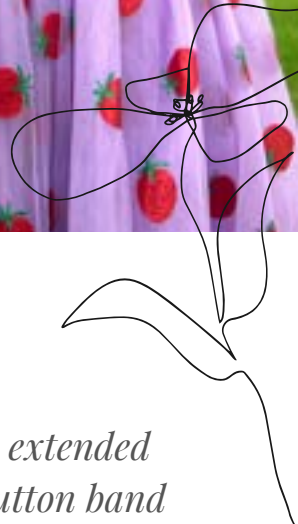


MODS

Cropped length, 3/4 sleeves, extended lace panel for main body. Button band instead of shawl collar.

COMMENTS

Hardest part: getting to grips with cesc, which I found challenging even at the end. Easiest part: counter-intuitively, the lace, as this was a stitch that was more familiar to me than cesc. Advice: pick a non-fluffy yarn that is not too dark in colour; I would also recommend a solid or semi-solid colour. Favourite part: the lace!





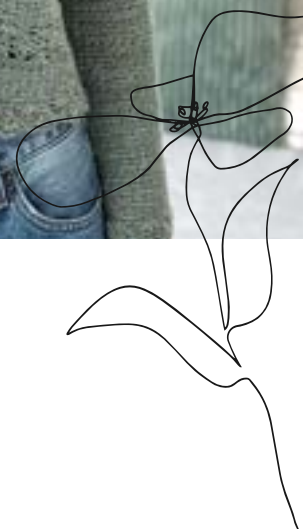
MEIKE

INSTA: @MUECKCHEN23

RAVELRY: MEIKE23

Size 2

Drops Baby Merino, Colour 50



MODS

I made the cardigan without the shawl. I made a cropped version with long sleeves.

COMMENTS

There is no sewing necessary. That's great! I love the possibility of making different versions. Work the slst for the button band as loose as possible. The texture is amazing!