

When I lived in Bulgaria, winters were tough. It would snow so heavily that the whole world would turn white. But snowdrops (the flowers that are the namesake of this design) were the first to peek through the snow and announce the arrival of Spring. So snowdrops signify hope and warmth to me, the perfect companion to get you through the cold of winter. Snowdrops is a compound raglan pullover constructed top-down, with short row shaping at the back of the neck. It features a delicate but very easy to memorize lace pattern throughout. It is highly adjustable with the body and sleeve length easy to customize.

[#SnowdropsPullover](#)



NOMAD
STITCHES



SAMPLE INFORMATION

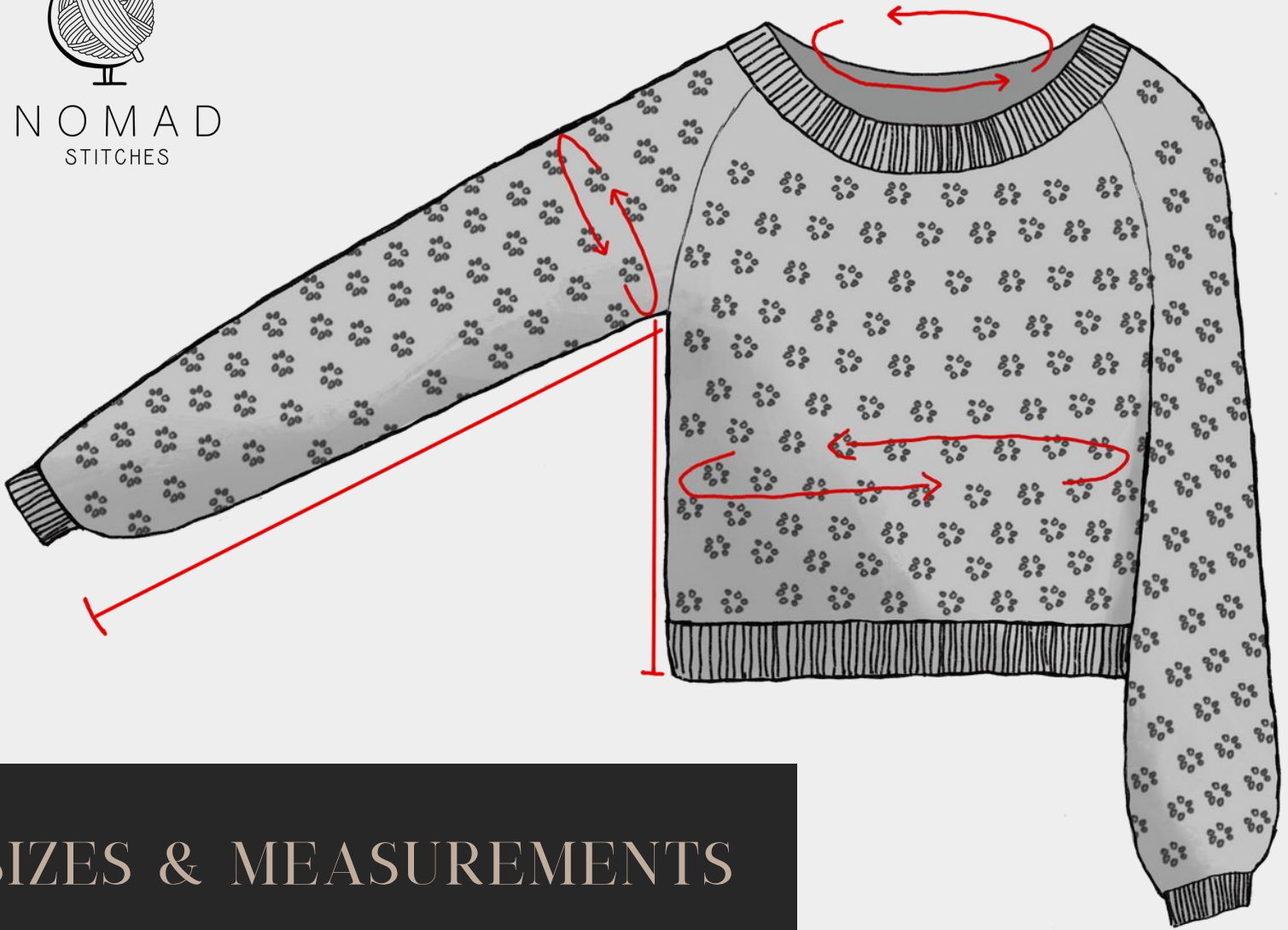
Sample is size 4, crop length.

Model measures ~100 cm/39.25 in at bust.

*Yarn used: Valeria Lanas, Merino Extra
(60% Wool, 40% Acrylic; 100g, 240 m / 262
yds) in color Silver (023).*



NOMAD
STITCHES



SIZES & MEASUREMENTS

THE FOLLOWING ARE THE FINISHED GARMENT
MEASUREMENTS PER SIZE: 1 (2, 3, 4, 5) (6, 7, 8, 9, 10)

- Bust: 80 (89, 102, 111, 120) (133.5, 142, 151, 160) cm / 31½ (35, 40¼, 43¾, 47¼) (52½, 56, 59½, 63) in
- Neck Circumference: 25.5 (26.5, 29.5, 32.5, 34.5) (36.5, 36.5, 36.5, 38.5) cm / 10 (10½, 11½, 13, 13½) (14½, 14½, 14½, 15½) in
- Sleeve Upper arm Circumference: 31 (31, 31, 35.5, 40) (44.5, 49, 49, 49) cm / 12¼ (12¼, 12¼, 14, 15¾) (17½, 19¼, 19¼, 19¼) in
- Body Length from underarm2: 25 cm / 9¾ in cropped; 35.5 cm / 14 in hip length
- Sleeve Length from underarm2: 45.5 cm / 18 in

Designed to be worn with 4 - 10 cm / 1¾ - 4 in of positive ease
Adjustable to taste.





YARDAGE REQUIREMENTS

YARN: DK or light worsted weight yarn (size 3 or 4)

830 (905, 995, 1130, 1245) (1405, 1520, 1625, 1685) m / 910 (990, 1085, 1235, 1365) (1540, 1660, 1775, 1840) yds for a cropped pullover with long sleeves;

990 (1085, 1200, 1350, 1485) (1675, 1805, 1930, 2005) m / 1085 (1185, 1310, 1480, 1625) (1830, 1970, 2110, 2195) yds for a hip-length pullover with long sleeves.

Amounts include 5% extra for swatching and margin of error.



ALTERNATIVE YARNS

Any DK weight yarn will work, but here are some I would recommend:

- Sirdar, Cashmere Merino Silk DK (75% Merino Wool, 20% Silk, 5% Cashmere)
- KnitPicks, Gloss DK (70% Merino Wool, 30% Silk)
- Lion Brand, LB Collection® Superwash Merino Yarn (100% Extra Fine Wool)

PATTERN OVERVIEW



SNOWDROPS PULLOVER

BY SANDRA GUTIERREZ

ABOUT

When I read in magazines, writers were tough. It would seem to be that the whole world would turn against you. But when I read the pattern, I realized that the whole world was on my side. I was not alone. I was part of a community. I was part of a team. I was part of a family. I was part of a tribe. I was part of a nation. I was part of a world. I was part of a universe. I was part of a everything.

YARN LEVEL

4

USDA

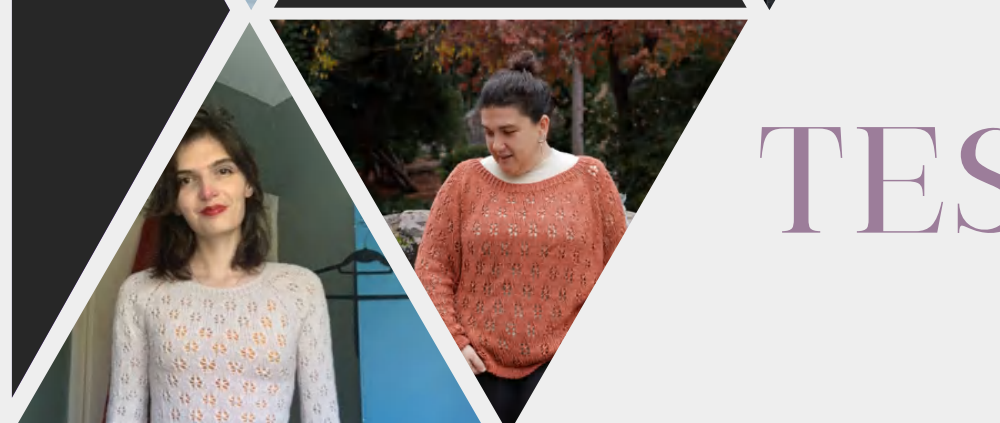
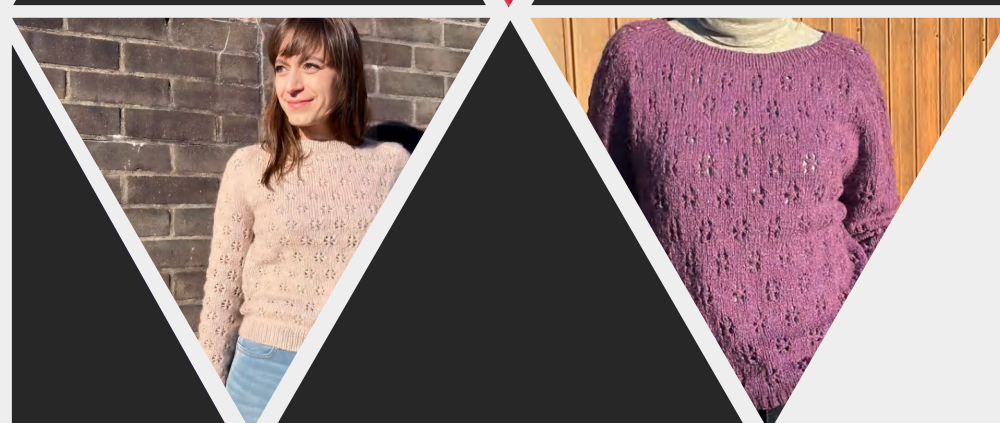
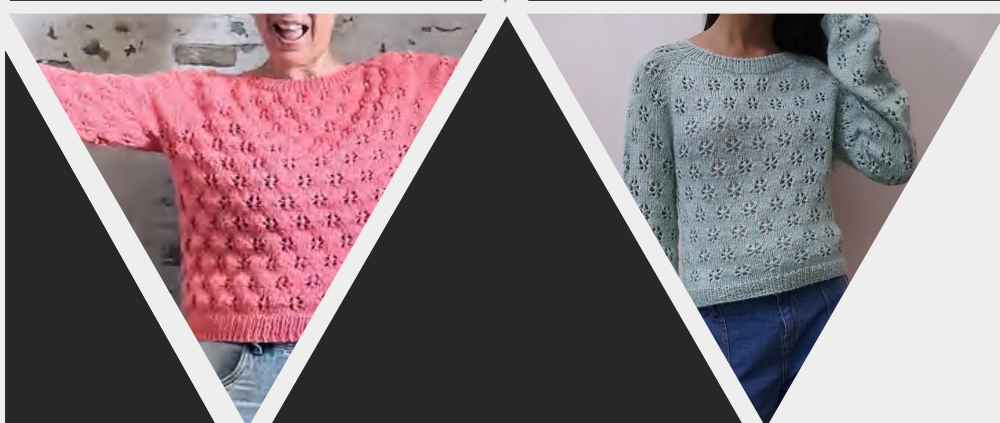
4

Size + Measurements

This pattern comes in 14 different sizes. The instructions for each size are color-coded with the order of the sizes: XS, S, M, L, XL, 2XL, 3XL, 4XL, 5XL, 6XL, 7XL, 8XL, 9XL, 10XL, 11XL, 12XL, 13XL, 14XL.

Neck Circumference

30 (32, 34, 36, 38, 40, 42, 44, 46, 48, 50, 52, 54, 56, 58, 60, 62, 64, 66, 68, 70, 72, 74, 76, 78, 80, 82, 84, 86, 88, 90, 92, 94, 96, 98, 100, 102, 104, 106, 108, 110, 112, 114, 116, 118, 120, 122, 124, 126, 128, 130, 132, 134, 136, 138, 140, 142, 144, 146, 148, 150, 152, 154, 156, 158, 160, 162, 164, 166, 168, 170, 172, 174, 176, 178, 180, 182, 184, 186, 188, 190, 192, 194, 196, 198, 200, 202, 204, 206, 208, 210, 212, 214, 216, 218, 220, 222, 224, 226, 228, 230, 232, 234, 236, 238, 240, 242, 244, 246, 248, 250, 252, 254, 256, 258, 260, 262, 264, 266, 268, 270, 272, 274, 276, 278, 280, 282, 284, 286, 288, 290, 292, 294, 296, 298, 300, 302, 304, 306, 308, 310, 312, 314, 316, 318, 320, 322, 324, 326, 328, 330, 332, 334, 336, 338, 340, 342, 344, 346, 348, 350, 352, 354, 356, 358, 360, 362, 364, 366, 368, 370, 372, 374, 376, 378, 380, 382, 384, 386, 388, 390, 392, 394, 396, 398, 400, 402, 404, 406, 408, 410, 412, 414, 416, 418, 420, 422, 424, 426, 428, 430, 432, 434, 436, 438, 440, 442, 444, 446, 448, 450, 452, 454, 456, 458, 460, 462, 464, 466, 468, 470, 472, 474, 476, 478, 480, 482, 484, 486, 488, 490, 492, 494, 496, 498, 500, 502, 504, 506, 508, 510, 512, 514, 516, 518, 520, 522, 524, 526, 528, 530, 532, 534, 536, 538, 540, 542, 544, 546, 548, 550, 552, 554, 556, 558, 560, 562, 564, 566, 568, 570, 572, 574, 576, 578, 580, 582, 584, 586, 588, 590, 592, 594, 596, 598, 600, 602, 604, 606, 608, 610, 612, 614, 616, 618, 620, 622, 624, 626, 628, 630, 632, 634, 636, 638, 640, 642, 644, 646, 648, 650, 652, 654, 656, 658, 660, 662, 664, 666, 668, 670, 672, 674, 676, 678, 680, 682, 684, 686, 688, 690, 692, 694, 696, 698, 700, 702, 704, 706, 708, 710, 712, 714, 716, 718, 720, 722, 724, 726, 728, 730, 732, 734, 736, 738, 740, 742, 744, 746, 748, 750, 752, 754, 756, 758, 760, 762, 764, 766, 768, 770, 772, 774, 776, 778, 780, 782, 784, 786, 788, 790, 792, 794, 796, 798, 800, 802, 804, 806, 808, 810, 812, 814, 816, 818, 820, 822, 824, 826, 828, 830, 832, 834, 836, 838, 840, 842, 844, 846, 848, 850, 852, 854, 856, 858, 860, 862, 864, 866, 868, 870, 872, 874, 876, 878, 880, 882, 884, 886, 888, 890, 892, 894, 896, 898, 900, 902, 904, 906, 908, 910, 912, 914, 916, 918, 920, 922, 924, 926, 928, 930, 932, 934, 936, 938, 940, 942, 944, 946, 948, 950, 952, 954, 956, 958, 960, 962, 964, 966, 968, 970, 972, 974, 976, 978, 980, 982, 984, 986, 988, 990, 992, 994, 996, 998, 1000, 1002, 1004, 1006, 1008, 1010, 1012, 1014, 1016, 1018, 1020, 1022, 1024, 1026, 1028, 1030, 1032, 1034, 1036, 1038, 1040, 1042, 1044, 1046, 1048, 1050, 1052, 1054, 1056, 1058, 1060, 1062, 1064, 1066, 1068, 1070, 1072, 1074, 1076, 1078, 1080, 1082, 1084, 1086, 1088, 1090, 1092, 1094, 1096, 1098, 1100, 1102, 1104, 1106, 1108, 1110, 1112, 1114, 1116, 1118, 1120, 1122, 1124, 1126, 1128, 1130, 1132, 1134, 1136, 1138, 1140, 1142, 1144, 1146, 1148, 1150, 1152, 1154, 1156, 1158, 1160, 1162, 1164, 1166, 1168, 1170, 1172, 1174, 1176, 1178, 1180, 1182, 1184, 1186, 1188, 1190, 1192, 1194, 1196, 1198, 1200, 1202, 1204, 1206, 1208, 1210, 1212, 1214, 1216, 1218, 1220, 1222, 1224, 1226, 1228, 1230, 1232, 1234, 1236, 1238, 1240, 1242, 1244, 1246, 1248, 1250, 1252, 1254, 1256, 1258, 1260, 1262, 1264, 1266, 1268, 1270, 1272, 1274, 1276, 1278, 1280, 1282, 1284, 1286, 1288, 1290, 1292, 1294, 1296, 1298, 1300, 1302, 1304, 1306, 1308, 1310, 1312, 1314, 1316, 1318, 1320, 1322, 1324, 1326, 1328, 1330, 1332, 1334, 1336, 1338, 1340, 1342, 1344, 1346, 1348, 1350, 1352, 1354, 1356, 1358, 1360, 1362, 1364, 1366, 1368, 1370, 1372, 1374, 1376, 1378, 1380, 1382, 1384, 1386, 1388, 1390, 1392, 1394, 1396, 1398, 1400, 1402, 1404, 1406, 1408, 1410, 1412, 1414, 1416, 1418, 1420, 1422, 1424, 1426, 1428, 1430, 1432, 1434, 1436, 1438, 1440, 1442, 1444, 1446, 1448, 1450, 1452, 1454, 1456, 1458, 1460, 1462, 1464, 1466, 1468, 1470, 1472, 1474, 1476, 1478, 1480, 1482, 1484, 1486, 1488, 1490, 1492, 1494, 1496, 1498, 1500, 1502, 1504, 1506, 1508, 1510, 1512, 1514, 1516, 1518, 1520, 1522, 1524, 1526, 1528, 1530, 1532, 1534, 1536, 1538, 1540, 1542, 1544, 1546, 1548, 1550, 1552, 1554, 1556, 1558, 1560, 1562, 1564, 1566, 1568, 1570, 1572, 1574, 1576, 1578, 1580, 1582, 1584, 1586, 1588, 1590, 1592, 1594, 1596, 1598, 1600, 1602, 1604, 1606, 1608, 1610, 1612, 1614, 1616, 1618, 1620, 1622, 1624, 1626, 1628, 1630, 1632, 1634, 1636, 1638, 1640, 1642, 1644, 1646, 1648, 1650, 1652, 1654, 1656, 1658, 1660, 1662, 1664, 1666, 1668, 1670, 1672, 1674, 1676, 1678, 1680, 1682, 1684, 1686, 1688, 1690, 1692, 1694, 1696, 1698, 1700, 1702, 1704, 1706, 1708, 1710, 1712, 1714, 1716, 1718, 1720, 1722, 1724, 1726, 1728, 1730, 1732, 1734, 1736, 1738, 1740, 1742, 1744, 1746, 1748, 1750, 1752, 1754, 1756, 1758, 1760, 1762, 1764, 1766, 1768, 1770, 1772, 1774, 1776, 1778, 1780, 1782, 1784, 1786, 1788, 1790, 1792, 1794, 1796, 1798, 1800, 1802, 1804, 1806, 1808, 1810, 1812, 1814, 1816, 1818, 1820, 1822, 1824, 1826, 1828, 1830, 1832, 1834, 1836, 1838, 1840, 1842, 1844, 1846, 1848, 1850, 1852, 1854, 1856, 1858, 1860, 1862, 1864, 1866, 1868, 1870, 1872, 1874, 1876, 1878, 1880, 1882, 1884, 1886, 1888, 1890, 1892, 1894, 1896, 1898, 1900, 1902, 1904, 1906, 1908, 1910, 1912, 1914, 1916, 1918, 1920, 1922, 1924, 1926, 1928, 1930, 1932, 1934, 1936, 1938, 1940, 1942, 1944, 1946, 1948, 1950, 1952, 1954, 1956, 1958, 1960, 1962, 1964, 1966, 1968, 1970, 1972, 1974, 1976, 1978, 1980, 1982, 1984, 1986, 1988, 1990, 1992, 1994, 1996, 1998, 2000, 2002, 2004, 2006, 2008, 2010, 2012, 2014, 2016, 2018, 2020, 2022, 2024, 2026, 2028, 2030, 2032, 2034, 2036, 2038, 2040, 2042, 2044, 2046, 2048, 2050, 2052, 2054, 2056, 2058, 2060, 2062, 2064, 2066, 2068, 2070, 2072, 2074, 2076, 2078, 2080, 2082, 2084, 2086, 2088, 2090, 2092, 2094, 2096, 2098, 2100, 2102, 2104, 2106, 2108, 2110, 2112, 2114, 2116, 2118, 2120, 2122, 2124, 2126, 2128, 2130, 2132, 2134, 2136, 2138, 2140, 2142, 2144, 2146, 2148, 2150, 2152, 2154, 2156, 2158, 2160, 2162, 2164, 2166, 2168, 2170, 2172, 2174, 2176, 2178, 2180, 2182, 2184, 2186, 2188, 2190, 2192, 2194, 2196, 2198, 2200, 2202, 2204, 2206, 2208, 2210, 2212, 2214, 2216, 2218, 2220, 2222, 2224, 2226, 2228, 2230, 2232, 2234, 2236, 2238, 2240, 2242, 2244, 2246, 2248, 2250, 2252, 2254, 2256, 2258, 2260, 2262, 2264, 2266, 2268, 2270, 2272, 2274, 2276, 2278, 2280, 2282, 2284, 2286, 2288, 2290, 2292, 2294, 2296, 2298, 2300, 2302, 2304, 2306, 2308, 2310, 2312, 2314, 2316, 2318, 2320, 2322, 2324, 2326, 2328, 2330, 2332, 2334, 2336, 2338, 2340, 2342, 2344, 2346, 2348, 2350, 2352, 2354, 2356, 2358, 2360, 2362, 2364, 2366, 2368, 2370, 2372, 2374, 2376, 2378, 2380, 2382, 2384, 2386, 2388, 2390, 2392, 2394, 2396, 2398, 2400, 2402, 2404, 2406, 2408, 2410, 2412, 2414, 2416, 2418, 2420, 2422, 2424, 2426, 2428, 2430, 2432, 2434, 2436, 2438, 2440, 2442, 2444, 2446, 2448, 2450, 2452, 2454, 2456, 2458, 2460, 2462, 2464, 2466, 2468, 2470, 2472, 2474, 2476, 2478, 2480, 2482, 2484, 2486, 2488, 2490, 2492, 2494, 2496, 2498, 2500, 2502, 2504, 2506, 2508, 2510, 2512, 2514, 2516, 2518, 2520, 2522, 2524, 2526, 2528, 2530, 2532, 2534, 2536, 2538, 2540, 2542, 2544, 2546, 2548, 2550, 2552, 2554, 2556, 2558, 2560, 2562, 2564, 2566, 2568, 2570, 2572, 2574, 2576, 2578, 2580, 2582, 2584, 2586, 2588, 2590, 2592, 2594, 2596, 2598, 2600, 2602, 2604, 2606, 2608, 2610, 2612, 2614, 2616, 2618, 2620, 2622, 2624, 2626, 2628, 2630, 2632, 2634, 2636, 2638, 2640, 2642, 2644, 2646, 2648, 2650, 2652, 2654, 2656, 2658, 2660, 2662, 2664, 2666, 2668, 2670, 2672, 2674, 2676, 2678, 2680, 2682, 2684, 2686, 2688, 2690, 2692, 2694, 2696, 2698, 2700, 2702, 2704, 2706, 2708, 2710, 2712, 2714, 2716, 2718, 2720, 2722, 2724, 2726, 2728, 2730, 2732, 2734, 2736, 2738, 2740, 2742, 2744, 2746, 2748, 2750, 2752, 2754, 2756, 2758, 2760, 2762, 2764, 2766, 2768, 2770, 2772, 2774, 2776, 2778, 2780, 2782, 2784, 2786, 2788, 2790, 2792, 2794, 2796, 2798, 2800, 2802, 2804, 2806, 2808, 2810, 2812, 2814, 2816, 2818, 2820, 2822, 2824, 2826, 2828, 2830, 2832, 2834, 2836, 2838, 2840, 2842, 2844, 2846, 2848, 2850, 2852, 2854, 2856, 2858, 2860, 2862, 2864, 2866, 2868, 2870, 2872, 2874, 2876, 2878, 2880, 2882, 2884, 2886, 2888, 2890, 2892, 2894, 2896, 2898, 2900, 2902, 2904, 2906, 2908, 2910, 2912, 2914, 2916, 2918, 2920, 2922, 2924, 2926, 2928, 2930, 2932, 2934, 2936, 2938, 2940, 2942, 2944, 2946, 2948, 2950, 2952, 2954, 2956, 2958, 2960, 2962, 2964, 2966, 2968, 2970, 2972, 2974, 2976, 2978, 2980, 2982, 2984, 2986, 2988, 2990, 2992, 2994, 2996, 2998, 3000, 3002, 3004, 3006, 3008, 3010, 3012, 3014, 3016, 3018, 3020, 3022, 3024, 3026, 3028, 3030, 3032, 3034, 3036, 3038, 3040, 3042, 3044, 3046, 3048, 3050, 3052, 3054, 3056, 3058, 3060, 3062, 3064, 3066, 3068, 3070, 3072, 3074, 3076, 3078, 3080, 3082, 3084, 3086, 3088, 3090, 3092, 3094, 3096, 3098, 3100, 3102, 3104, 3106, 3108, 3110, 3112, 3114, 3116, 3118, 3120, 3122, 3124, 3126, 3128, 3130, 3132, 3134, 3136, 3138, 3140, 3142, 3144, 3146, 3148, 3150, 3152, 3154, 3156, 3158, 3160, 3162, 3164, 3166, 3168, 3170, 3172, 3174, 3176, 3178, 3180, 3182, 3184, 3186, 3188, 3190, 3192, 3194, 3196, 3198, 3200, 3202, 3204, 3206, 3208, 3210, 3212, 3214, 3216, 3218, 3220, 3222, 3224, 3226, 3228, 3230, 3232, 3234, 3236, 3238, 3240, 3242, 3244, 3246, 3248, 3250, 3252, 3254, 3256, 3258, 3260, 3262, 3264, 3266, 3268, 3270, 3272, 3274, 3276, 3278, 3280, 3282, 3284, 3286, 3288, 3290, 3292, 3294, 3296, 3298, 3300, 3302, 3304, 3306, 3308, 3310, 3312, 3314, 3316, 3318, 3320, 3322, 3324, 3326, 3328, 3330, 3332, 3334, 3336, 3338, 3340, 3342, 3344, 3346, 3348, 3350, 3352, 3354, 3356, 3358, 3360, 3362, 3364, 3366, 3368, 3370, 3372, 3374, 3376, 3378, 3380, 3382, 3384, 3386, 3388, 3390, 3392, 3394, 3396, 3398, 3400, 3402, 3404, 3406, 3408, 3410, 3412, 3414, 3416, 3418, 3420, 3422, 3424, 3426, 3428, 3430, 3432, 3434, 3436, 3438, 3440, 3442, 3444, 3446, 3448, 3450, 3452, 3454, 3456, 3458, 3460, 3462, 3464, 3466, 3468, 3470, 3472, 3474, 3476, 3478, 3480, 3482, 3484, 3486, 3488, 3490, 3492, 3494, 3496, 3498, 3500, 3502, 3504, 3506, 3508, 3510, 3512, 3514, 3516, 3518, 3520, 3522, 3524, 3526, 3528, 3530, 3532, 3534, 3536, 3538, 3540, 3542, 3544, 3546, 3548, 3550, 3552, 3554, 3556, 3558, 3560, 3562, 3564, 3566, 3568, 3570, 3572, 3574, 3576, 3578, 3580, 3582, 3584, 3586, 3588, 3590, 3592, 3594, 3596, 3598, 3600, 3602, 3604, 3606, 3608, 3610, 3612, 3614, 3616, 3618, 3620, 3622, 3624, 3626, 3628, 3630, 3632, 3634, 3636, 3638, 3640, 3642, 3644, 3646, 3648, 3650, 3652, 3654, 3656, 3658, 3660, 3662, 3664, 3666, 3668, 3670, 3672, 3674, 3676, 3678, 3680, 3682, 3684, 3686, 3688, 3690, 3692, 3694, 3696, 3698, 3700, 3702, 3704, 3706, 3708, 3710, 3712, 3714, 3716, 3718, 3720, 3722, 3724, 3726, 3728, 3730, 3732, 3734, 3736, 3738, 3740, 3742, 3744, 3746, 3748, 3750, 3752, 3754, 3756, 3758, 3760, 3762, 3764, 3766, 3768, 3770, 3772, 3774, 3776, 3778, 3780, 3782, 3784, 3786, 3788, 3790, 3792, 3794, 3796, 3798, 3800, 3802, 3804, 3806, 3808, 3810, 3812, 3814, 3816, 3818, 3820, 3822, 3824, 3826, 3828, 3830, 3832, 3834, 3836, 3838, 3840, 3842, 3844, 3846, 3848, 3850, 3852, 3854, 3856, 3858, 3860, 3862, 3864, 3866, 3868, 3870, 3872, 3874, 3876, 3878, 3880, 3882, 3884, 3886, 3888, 3890, 3892, 3894, 3896, 3898, 3900, 3902, 3904, 3906, 3908, 3910, 3912, 3914, 3916, 3918, 3920, 3922, 3924, 3926, 3928, 3930, 3932, 3934, 3936, 3938, 3940, 3942, 3944, 3946, 3948, 3950, 3952, 3954, 3956, 3958, 3960, 3962, 3964, 3966, 3968, 3970, 3972, 3974, 3976, 3978, 3980, 3982, 3984, 3986, 3988, 3990, 3992, 3994, 3996, 3998, 4000, 4002, 4004, 4006, 4008, 4010, 4012, 4014, 4016, 4018, 4020, 4022, 4024, 4026, 4028, 4030, 4032, 4034, 4036, 4038, 4040, 4042, 4044, 4046, 4048, 4050, 4052, 4054, 4056, 4058, 4060, 4062, 4064, 4066, 4068, 4070, 4072, 4074, 4076, 4078, 4080, 4082, 4084, 4086, 4088, 4090, 4092, 4094, 4096, 4098, 4100, 4102, 4104, 4106, 4108, 4110, 4112, 4114, 4116, 4118, 4120, 4122, 4124, 4126, 4128, 4130, 4132, 4134, 4136, 4138, 4140, 4142, 4144, 4146, 4148, 4150, 4152, 4154, 4156, 4158, 4160, 4162, 4164, 4166, 4168, 4170, 4172, 4174, 41



TESTERS

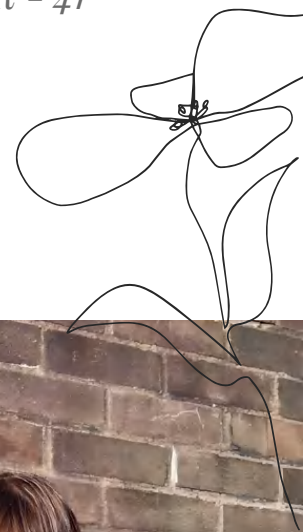




ANNA KHAMBATA

INSTA: @MYWOOLLYLIFE
RAVELRY: ANSKILIINI

Size 3
King Cole Merino Blend DK - 41
Oatmeal



MODS

None.

COMMENTS

I loved the pattern and it was such a breeze to knit! I really liked the individual size tables for the yoke, those made the increases very easy to follow. I agree with the others that short row videos would be a great addition to the pattern, especially for the purl side lace, but it's manageable even without.







MÓNICA DELGADO

INSTA: @MOCKAAX

RAVELRY: MOCKAAX

Size 3

Valeria di Roma Merino extra color

c184

MODS

None

COMMENTS

It is an addictive pattern. Once you start it you just want to finish it to see the result. Once worn, it looks very flattering.





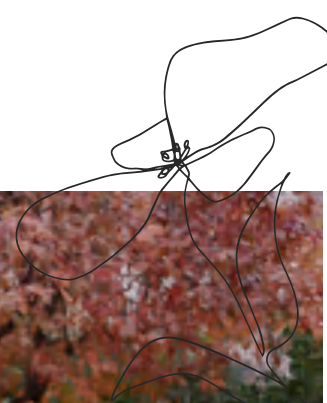


NOELIA FLÓREZ MIGUEL

INSTA: @ALMACAZURRA
RAVELRY: ALMACAZURRA

Size 5

*Pima Cotton 100 % de We are Knitters /
color canyon rose*



MODS

*Did double knitting on cuffs and hem.
Gauge was off, so fit is too oversized
and yoke is too deep. Beware of using
cotton and no blocking your swatch!*

COMMENTS

*At first, the pattern seems complex, but
once you get started, it takes no effort to
follow. The lace pattern is easy to
memorize. The images are a great help
and the video tutorial is great. I like
that you always make your patterns
suit many taste and options without
losing the design.*





NIMIDA AMEEN

INSTA: @NIMIDA4

RAVELRY: NIMIDA4

Size 1

Vidalana by Knitcrate. Linen Jewel in colorway Oasis (pastel green)

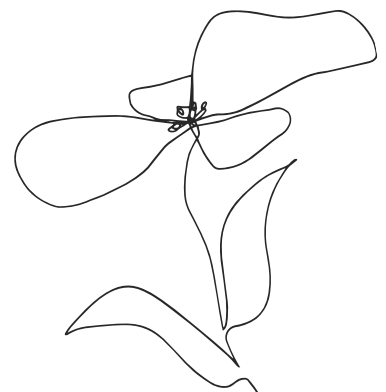


MODS

None.

COMMENTS

I thought the short rows would be hard to do, as I had not done them before. But the pattern explained it well, so I was able follow it and get it right. I loved doing the lace bit, just to see the finished product...snowdrop flower look.







LUCY CALVER

INSTA: @THISNANNYKNITS
RAVELRY: 7HISNANNYKNITS

Size 2

*Sirdar cashmere merino silk DK in
colour Riding red (404)*



MODS

None

COMMENTS

Had to focus on the short rows and increasing in lace pattern, but quickly got the hang of it. Lovely lace pattern and became easy to memorise. Great fit and beautiful flower pattern.







ANDREA BERKICS

INSTA: @KNOT.PURLFECT
RAVELRY: BANDI701

*Size 3
drops soft tweed 15 purple rain*



MODS

My row gauge was wrong so the fit is not that snug at the underarm area

COMMENTS

Doing lace on the ws is always a challenge, but the pattern is well written so it was easy to do the short row section. I love my new lace sweater!





ADDY YAP

INSTA: @ADITURTLE

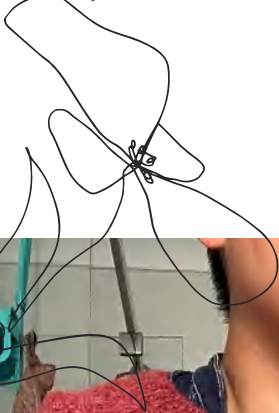
RAVELRY: ADITURTLE

Size 5

Drops Sky (colour: 9 Brick)

MODS

Elastic sewn into neckband for a closer to neck fit



COMMENTS

I love the fit of the sweater! The compound raglan fits perfectly (no sleeve separation at your belly button or up in your pits!) and the individual sized tables make it so easy to follow. The lace pattern is super easy to memorise and read. It helps the rows to fly by as you just want to get to the next lace repeat, I had no sleeve island or second sleeve syndrome. I did have to make sure I counted my stitches because I kept dropping my yarn overs but that was only in the first few rows while establishing the pattern, after that I was totally fine!



KATE RELTON

INSTA: @KATE_RELTON

RAVELRY: KATERELTON

Size 1

Paintbox Yarns Baby DK - Vanilla

Cream



MODS

none

COMMENTS

Increasing stitches while keeping the lace pattern correct takes some getting used to but after that it was plain sailing! The whole pullover comes together quickly and though the lace repeat is simple it creates a beautiful effect. I loved the finish of the raglan sleeves and the shape of the neckline. Overall a perfect autumn/winter staple but one with a little something extra to make it special.





PAULA ROCHA

INSTA: @TCREO_HANDMADE

RAVELRY: DAWNBSTEW

Size 6

Vidalana by Knitcrate. Linen Jewel in color Oasis (fingering) knit together with viscose lace in matching tones, from @tiendadehilados (local dyer)



MODS

None

COMMENTS

Hermoso patrón, con instrucciones fáciles de seguir y un bello resultado. El punto calado se aprende rápido, lo que hace que el proceso no se haga tedioso ni complicado

English - Beautiful pattern, with easy-to-follow instructions and a wonderful result. The lace pattern can be memorized quickly, which makes the process entertaining and not complicated.