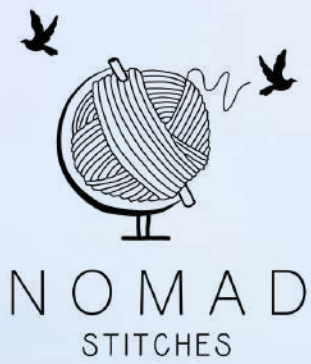


LOOKBOOK
SECRET GARDEN



NOMAD
STITCHES



The Secret Garden top is a versatile and fun Spring and Summer staple. With an elegant neckline and leaf motif lace at the bottom, you can easily wear it tucked into high waisted skirts or over jeans; and it can also be made into a dress! The pattern comes with detailed charts, written instructions and photos to help you complete the project. The length is adjustable to taste and there are 2 modifications for the back cleavage: high and low.

#SecretGardenTopt

SAMPLE #1

Sample is size 4, hip-length w low back, Body stopped after one full rep of Lace Chart.

Model measures ~100 cm/39.25 in at bust and ~120 cm/47.25 in around hips..

Sample used Pascuali Filati Naturali, Cumbria (60% Pima Cotton, 40% Bamboo Viscose; 50g, 150 m / 164 yds) in color Rosenquartz 345.



NOMAD
STITCHES





SAMPLE #2

Sample is size 4, cropped w low back. Body stopped after Lace Set Up.

Model measures ~100 cm/39.25 in at bust.

Sample used Pascuali Filati Naturali, Cumbria (60% Pima Cotton, 40% Bamboo Viscose; 50g, 150 m / 164 yds) in color Rosenquartz 345.

SAMPLE #3

Sample is size 4, dress w high back. Body stopped after 3.5 rep of Lace Chart.

Model measures ~100 cm/39.25 in at bust and ~120 cm/47.25 in around hips.

Sample used Knit Picks, Samia (80% Cupro, 20% Mulberry Silk; 50 g, 188 yds) in color Cove.



NOMAD
STITCHES



YARDAGE REQUIREMENTS

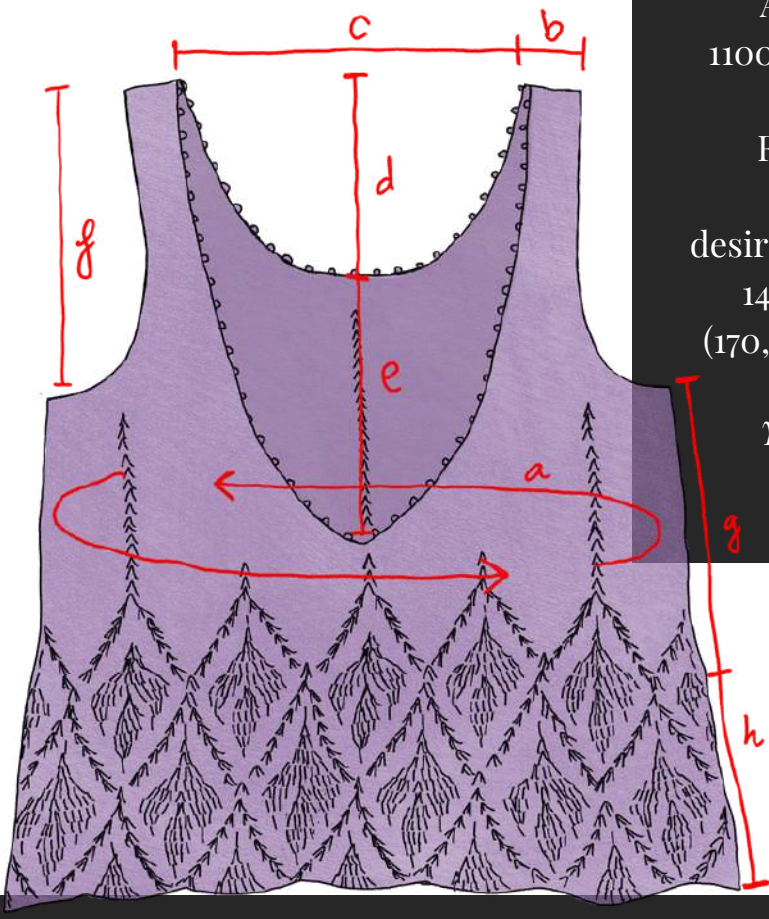
YARN: Fingering weight yarn (size 1)

Approx 435 (475, 515, 555, 605) (645, 685, 735, 775, 815) m / 475 (520, 565, 605, 660) (705, 745, 805, 845, 895) yds for a cropped top.

Approx 575 (660, 690, 745, 805) (865, 920, 985, 1040, 1100) m / 630 (690, 750, 815, 885) (945, 1005, 1080, 1140, 1205) yds for a hip-length top.

For a dress, you will rep Lace Chart between 2 - 6 more times than a hip-length top, depending on desired length - adjust yardage appropriately. Approx 140 (160, 175, 190, 205) (220, 235, 255, 270, 285) m / 155 (170, 190, 205, 225) (240, 260, 175, 295, 310) yds per each Chart rep.

Yardage provided includes a 5% extra for swatching and margin of error.



SIZES+MEASUREMENTS

THE FOLLOWING ARE THE FINISHED GARMENT MEASUREMENTS PER SIZE: 1 (2, 3, 4, 5) (6, 7, 8, 9, 10)

- a) Bust*: 73.5 (82, 90, 98, 106.5) (114.5, 122.5, 131, 139, 147.5) cm / 29 (32¹/₄, 35¹/₂, 38³/₄, 42) (45, 48¹/₄, 51¹/₂, 54³/₄, 58) in
- b) Strap Thickness: 4.5 (4.5, 4.5, 4.5, 5) (5, 5, 5.5, 5.5, 5.5) cm / 1³/₄ (1³/₄, 1³/₄, 1³/₄, 2) (2, 2, 2¹/₄, 2¹/₄, 2¹/₄) in
- c) Neck Width Front: 20.5 (22, 24, 26, 27.5) (28.5, 28.5, 27.5, 29.5, 29.5) cm / 8 (8³/₄, 9¹/₂, 10¹/₄, 11) (11¹/₄, 11¹/₄, 11, 11¹/₂, 11¹/₂) in
- d) Neck Depth Front: 14 (14, 14, 15, 15) (15, 15, 16, 16, 16) cm / 5¹/₂ (5¹/₂, 5¹/₂, 6, 6) (6, 6, 6¹/₄, 6¹/₄, 6¹/₄) in
- e) High Neck Depth Back: 21 (21.5, 23.5, 25, 25.5) (25, 25.5, 26.5, 28.5, 30) cm / 8¹/₄ (8¹/₂, 9¹/₄, 9³/₄, 10) (9³/₄, 10, 10¹/₂, 11¹/₄, 11³/₄) in
- e) Low Neck Depth Back: 35.5 (36.5, 37.5, 37.5, 38.5) (38.5, 38.5, 40, 40, 41.5) cm / 14 (14¹/₂, 14³/₄, 14³/₄, 15) (15, 15, 15³/₄, 15³/₄, 16¹/₄) in
- f) Armhole Depth: 21 (21.5, 23.5, 25, 25.5) (25, 25.5, 26.5, 28.5, 30) cm / 8¹/₄ (8¹/₂, 9¹/₄, 9³/₄, 10) (9³/₄, 10, 10¹/₂, 11¹/₄, 11³/₄) in
- g) Cropped Body from underarm**: approx 22 cm / 8¹/₂ in
- h) Hip-Length Body from underarm**: approx 35.5 cm / 14 in
- h) Knee-Length Dress from underarm**: between 62.5 cm / 24 in and 116.5 cm / 45³/₄ in to rep lace pattern 3 - 7 times.

*To be worn with 0 - 10 cm / 0 - 4 in of NEGATIVE ease around bust - it is recommended to size down when making a low-back top for a more fitted garment.

**Adjustable to taste, each lace repeat is 13.5 - 16 cm / 5¹/₄ - 6¹/₄ in (depending on weight/drape of fabric and hook size used).



NOMAD
STITCHES



ALTERNATIVE YARNS

Any fingering or light sport weight yarn will work, but here are some I recommend based on weight and composition:

DMC Natura, Just Cotton (100% Cotton)

Scheepjes, Bamboo Soft (50% Bamboo, 50% Cotton)

MillaMia, Naturally Baby Soft (50% Cotton, 50% Soy Viscose)

KnitPicks, Lindy Chain (70% Linen, 30% Pima Cotton)

KnitPicks, Comfy Fingering (75% Pima Cotton, 25% Acrylic)

KnitPicks, Samia (80% Cupro, 20% Mulberry Silk)

Lion Brand, Viscose Wrap Cone Yarn (100% Viscose)



CHANGES AFTER TESTING

Thanks to tester feedback, the straps were shortened slightly in the final version of the pattern.

PATTERN OVERVIEW



SECRET GARDEN TOP

by Andrea Cicuter

ABOUT

This top features a subtle mix of colors and textures, creating a delicate and romantic look. The lace is hand-knitted and the top is finished with a delicate, scalloped edge.

Model: ...
Materials: ...
Abbreviations: ...
Special Techniques: ...



ABBREVIATIONS (US)

- Ch:** chain
- sc:** single crochet
- hdc:** half double crochet
- dc:** double crochet
- tr:** triple crochet
- tbl:** into back loop
- tbl:** into front loop
- tbl:** into both loops

SPECIAL TECHNIQUES

Stitching on the Round: ...
Knitting: ...

PATTERN NOTES

The model is wearing a size 38-40. The top is finished with a delicate, scalloped edge. The lace is hand-knitted and the top is finished with a delicate, scalloped edge.

THE PATTERN

Top of Front

High Neckline (see also)

Row 1: ...

Stitch 1-1, 1-2, 1-3, 1-4, 1-5

Row 1: ...

Stitch 6-1, 6-2, 6-3, 6-4, 6-5 **Start shaping**

Row 1: ...

Stitch 7-1, 7-2, 7-3, 7-4, 7-5 **Start shaping**

Row 1: ...

Body (High Neck)

Row 1: ...

Top of Back - Low Back

Row 1: ...

Stitch 1-1, 1-2, 1-3, 1-4, 1-5

Row 1: ...

Stitch 6-1, 6-2, 6-3, 6-4, 6-5 **Start shaping**

Row 1: ...

Stitch 7-1, 7-2, 7-3, 7-4, 7-5 **Start shaping**

Row 1: ...

Edgings

Row 1: ...

FROM THE DESIGNER

CHARTS



TESTERS





MADALENA BASTAKOU

INSTA:

@THEWARDROBEPROJECT

RAVELRY: MADY-B

Size 3

Alize Diva

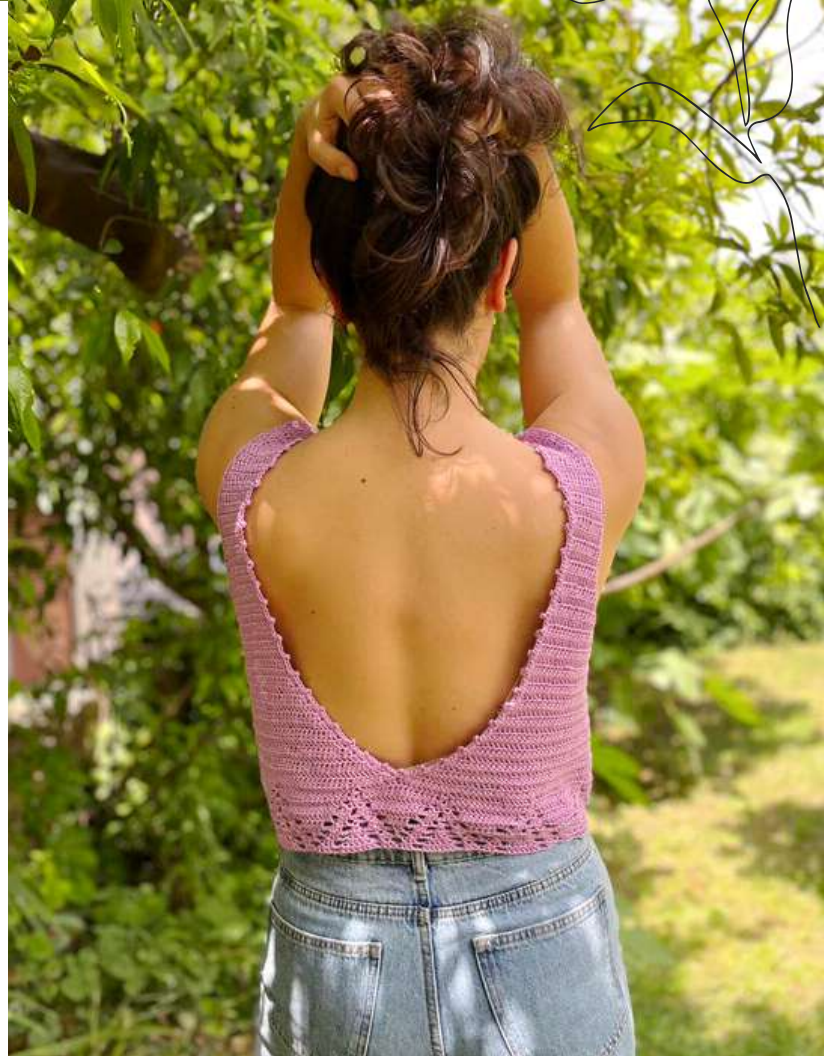


MODS

low back/ crop

COMMENTS

This pattern has the perfect ratio of repetitive and challenging crocheting to keep you invested! The outcome is the perfect summer top!





DAWN STEWART

INSTA:
@TYD_THEYARNDOCTOR

Size 5
Knitcrate vidalana tiptoe sock .
Linen spray



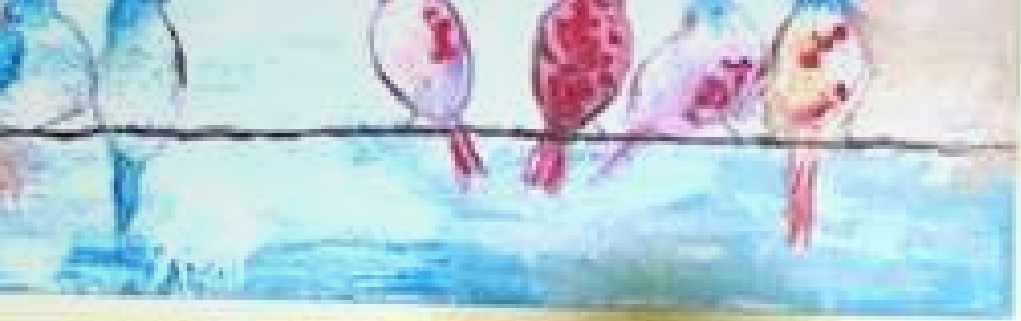
MODS

Low Back, Hip Length

COMMENTS

Really pretty and fast to make, even after frogging back to shoulders. Pay attention to v-stitches!

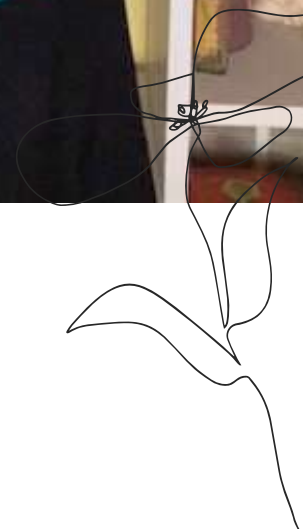




KELLY JAMES

INSTA: @KMENDLAR
RAVELRY: MMENDLAR

*Size 5
Yonkey monkey bamboo cotton*



MODS

Low back/hip length

COMMENTS

Quick to make and a perfect fit, I'll be making a dress version as well





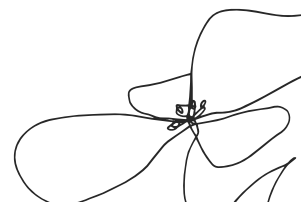
ELLEN FEIST

INSTA: ELLEN.F489

RAVELRY: ELLEN489

Size 1

*Merisilk (65% merino, 20% bamboo,
15% silk)*



MODS

low back cropped

COMMENTS

I love how this top turned out - the low back makes it feel extra special and the shape is very flattering





*Libby
Kimberley*

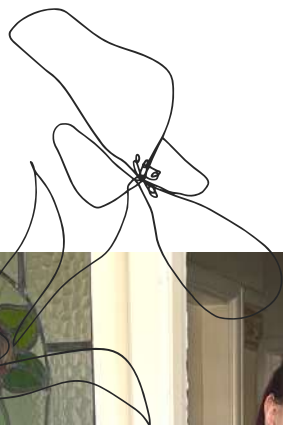
ELAINE LATTIMORE

INSTA: ELAINEELATTOMORE

RAVELRY: ELAINEB64

Size 7

Alize Diva



MODS

Low back / hip length

COMMENTS

*love how the pattern developed very
flattery*

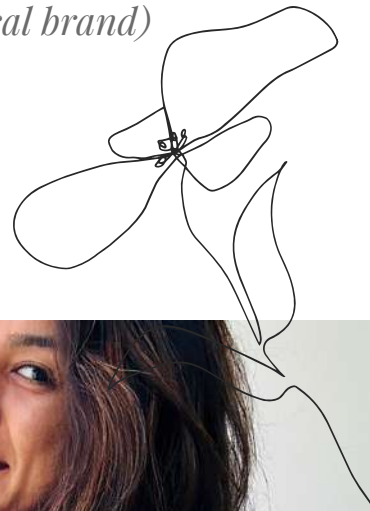




NIDHI KHATRI

INSTA: @GET__CRAFTY
RAVELRY: NIDHIKHATRI

Size 4
bamboo fingering (local brand)



MODS

low back/ hip length

COMMENTS

Perfect low back top that can be paired with anything. The lace edging is so beautiful. it's so addictive that you might wanna finish it in one go.

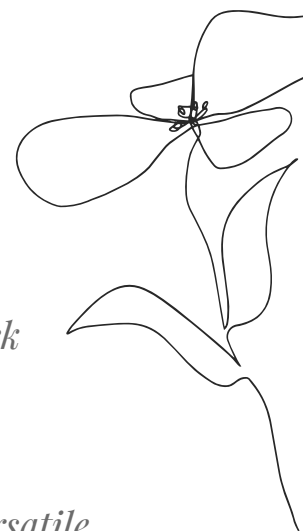




AMANDA WAGNER

INSTA:
WORSTEDHEARTFIBERARTS
RAVELRY: MANDADUBS

*Size 4
Ritual Dyes Undine Natural (382
yards/100grams), 60/40 cotton linen*



MODS

Cropped length / Low Back

COMMENTS

This is a beautiful and versatile pattern! So many different combos of length and back options! In the cotton linen yarn I can see this will be an instant summer staple.





DEBORAH HENNESSEY

INSTA:

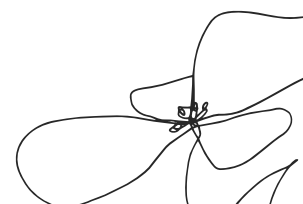
@DELIGHTFULDEBSTAR

RAVELRY: DEBSTAR70

Size 6

Bellissimo Airlie 100% combed cotton

Mustard



MODS

high back/hip length did 10 out of the 16 row pattern

COMMENTS

Looks complicated, but easy and beautiful to make up. A pleasure to make.





SARAH GROBMAN

INSTA: @CHEFFGIRLY
RAVELRY: CHEFGIRLYSARAH

*Size 7
Madeline tosh madtosh pashmina*

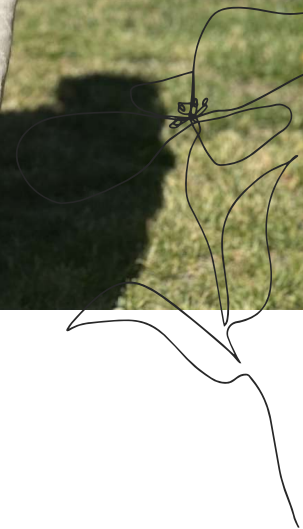


MODS

Hip Length / High back

COMMENTS

Lovely summer top that worked up quickly but be careful of gauge until lace section







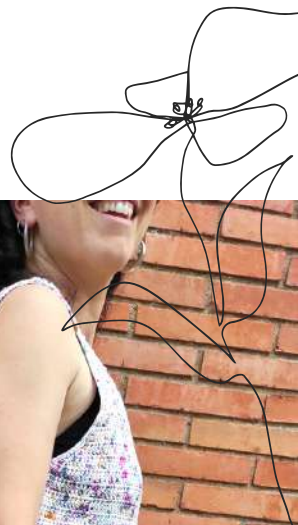
IOANNA ANGELOPOULOU

INSTA: SUKSUMUKSU

RAVELRY: SUKSUMUKSU

Size 2

*Rosários4 RO4-Regata#116VerdeBosque +
AdR Lanas AlgodonPuf#200NaranjaRosa*

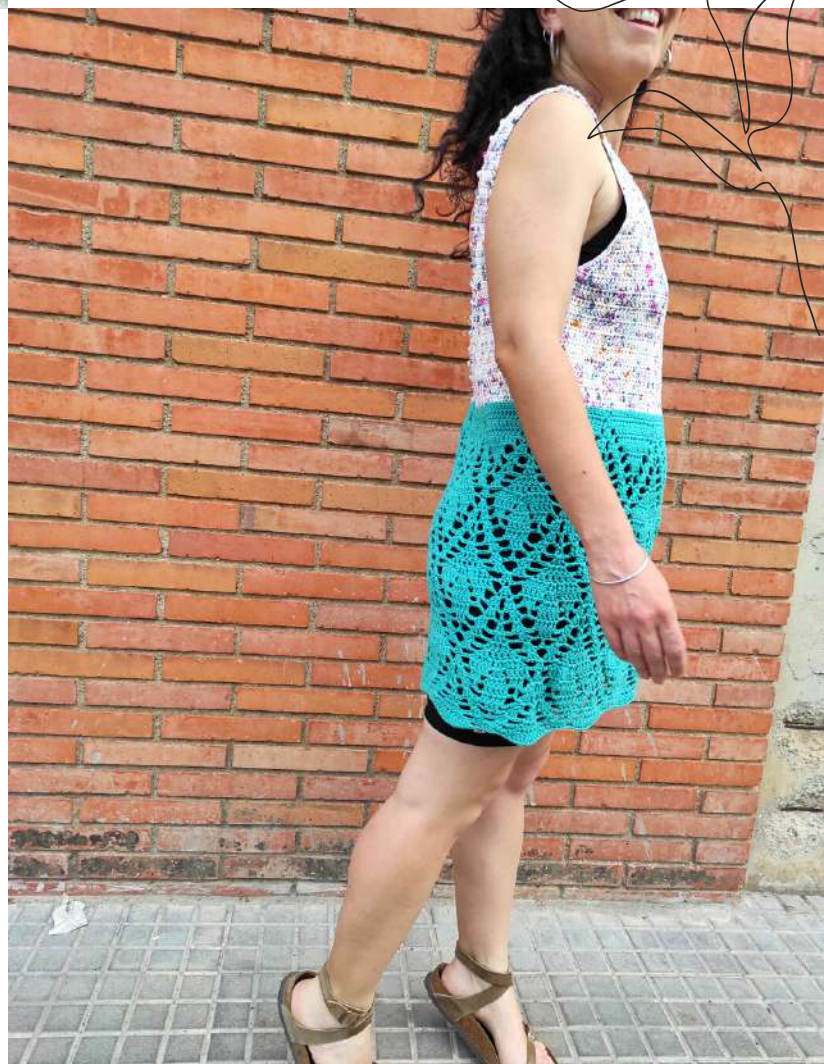


MODS

Low back dress

COMMENTS

It is a really quick making pattern with a lovely result. I love it as a dress with a low back because it is a great piece for the summer.





DIANE PAYES

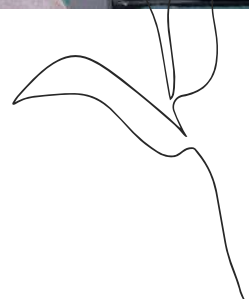
INSTA: @VIDACONOPIDA

RAVELRY: PIDAPOCKET

Size 2

WeCrochet Twill fingering - Rose

Heather - 100% superwash merino



MODS

Cropped Length / High Back

COMMENTS

Fun and easy make perfect for summer!





TRANG LE

INSTA: @IRISH_KLB
RAVELRY: KHUNGLONGBE

Size 3

Fingering Local Brand Amigo

Cotton/100% cotton/230m per skein/

Moss green



MODS

High back / 8 rows of 16 rows of chart 2

COMMENTS

*A quick and nice pattern for summer,
you can wear it as a top or a layer.*





COURTNEY BATCHELDER

INSTA: THE_HAPPY_PEAPOD

RAVELRY: THEHAPPYPEAPOD

Size 5

Hobbii Twister in color 116 (Plum)



MODS

*Hip length / High Back
I slip stitched around the neckline
and arm holes to help keep it's
lovely shape.*

COMMENTS

*This is a quick and fun pattern
that yields a gorgeous result.
Another home run from Sandra! ♥*





SIOBHAN BOOTHE

INSTA: @YARNOVERFLOYD
RAVELRY:YARNOVERFLOYD

Size 5

Pima Cotton sock weight/463yds per 100 g. 211 g used. Naturally dyed with Cochineal & Marigold. Colorway name "Anti-Hero"



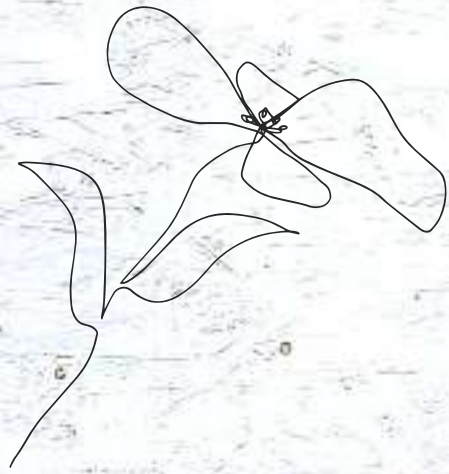
MODS

Low back, full lace pattern

COMMENTS

Per usual, Sandra has made an simple design, yet elevated design for anyone to make. Simple increases create elegant sloping sholders and a deceptively simple lace pattern gives you a gorgeous detail to add a level of complexity without overwhelming your brain while you're stitching. With all the options and flexibility in this pattern you're sure to be able to make one that suits your style!





PAULINA SMITH

INSTA:

@PAULINA.S.MARABOLI

RAVELRY: PAULINASMITH

Size 1

*Lanas Verito Algodon Mercerizado,
color 6 (aqua)*



MODS

Low back and hip length

COMMENTS

A simple yet elegant design with a stunning low back option and beautiful lace details. I enjoyed making this and am very happy with the result.





RACHEL LIM

INSTA: DEEPERINYARN
RAVELRY: DEEPERINYARN

Size 3

*Fingering Combed cotton by dyer
@yarn.musings / Balloon Flowers
660*



MODS

High back / 8 rows of the rest of lace

COMMENTS

Quick project which results in an amazing summer top. With the beautiful leaf motif lace details, it adds elegance to the design.







KIMBERLY GARLEY

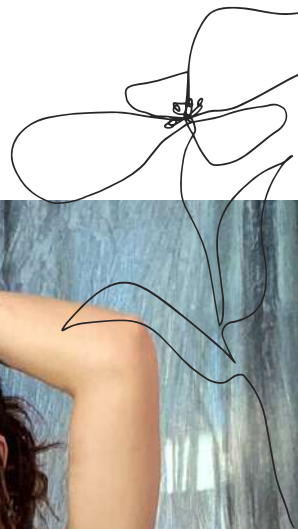
INSTA:

KIMBERLYGARTISTRY

RAVELRY: KIMBERLYGARTISTRY

Size 1

*urge yarns, Harvest Fingering. Thuja
(black)*



MODS

*Two rows of body patt for higher
crop*

COMMENTS

*This is a super customizable
pattern that made it possible to
get the exact fit I wanted and
any other I can dream up in the
future.*







MICHELLE ARAUJO

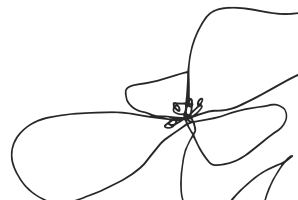
INSTA:

@MOONMAIDENCROCHET

RAVELRY: MICHELLMYBELLE

Size 4

Hobbii Dahlia 100% cotton Colour 04



MODS

High back, cropped length

COMMENTS

This top has so many variations, I plan to make them all! Low back, hip length, dress. Very easy to follow and beautiful results.

